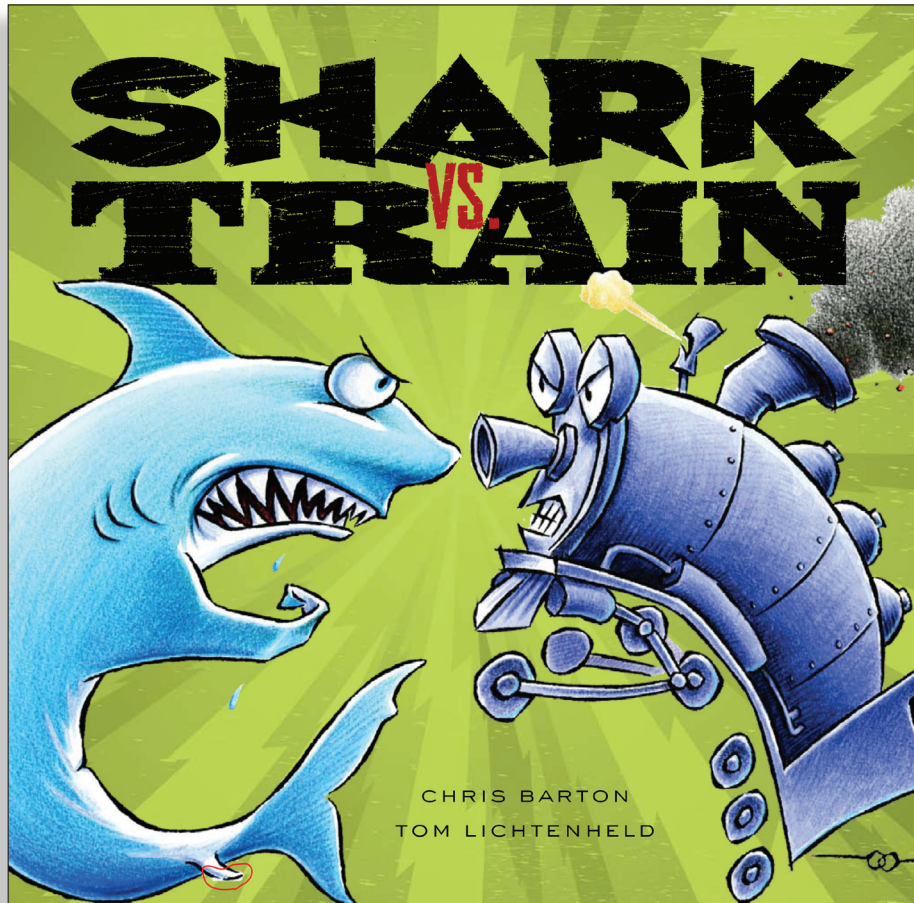


ACTIVITY GUIDE

BASED ON THE BOOK

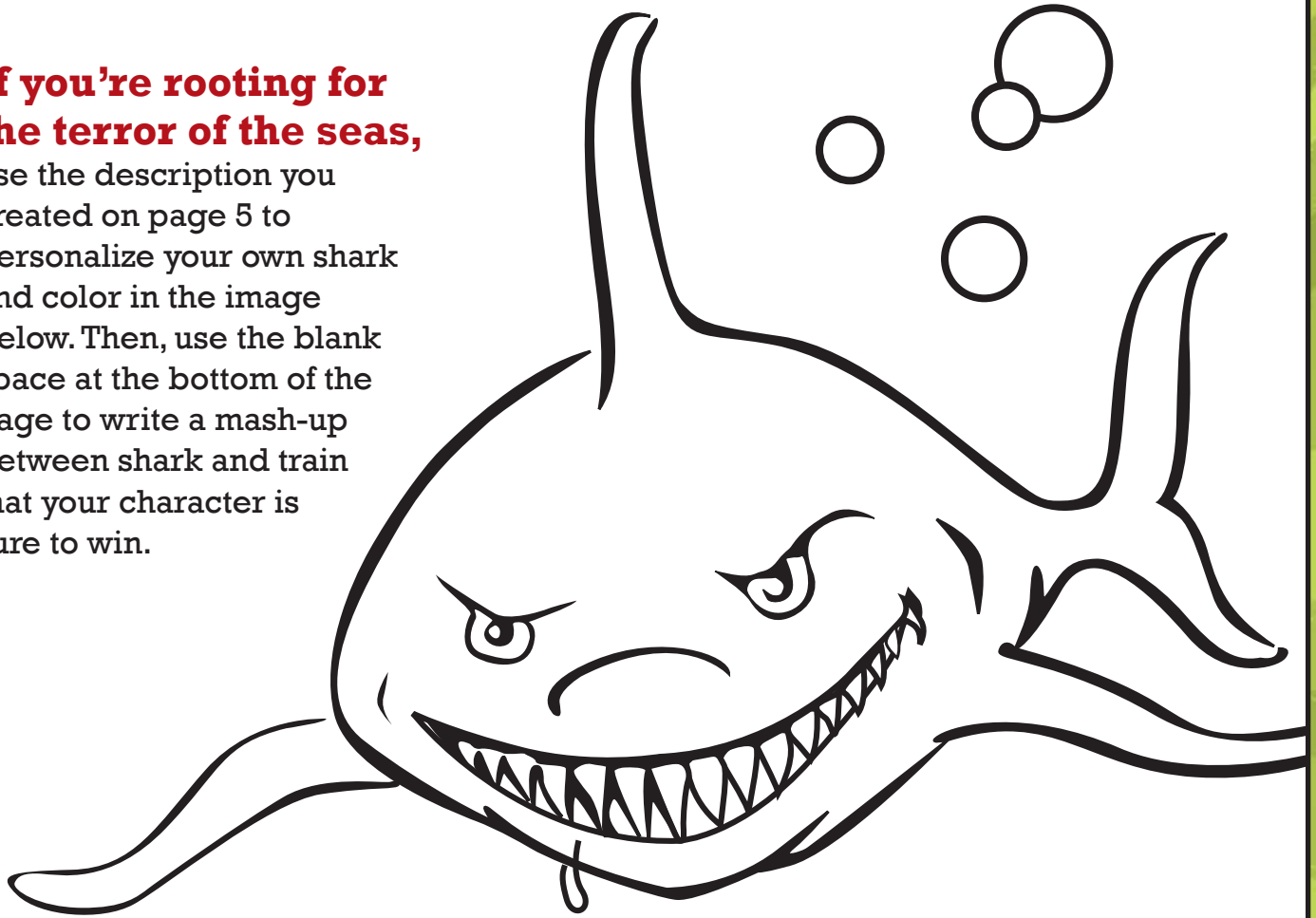


by Tom Lichtenheld and Chris Barton



Chew Chew!

If you're rooting for the terror of the seas, use the description you created on page 5 to personalize your own shark and color in the image below. Then, use the blank space at the bottom of the page to write a mash-up between shark and train that your character is sure to win.



Art © Tom Lichtenheld



LITTLE, BROWN AND COMPANY
BOOKS FOR YOUNG READERS

www.sharkvstrain.com

SHARK VS. TRAIN

By Chris Barton • Illustrated by Tom Lichtenheld

Available wherever books are sold.



Choo Choo!

If you're rooting for the king of the rails, use the description you created on page 5 to personalize your own train and color in the image below. Then, use the blank space at the bottom of the page to write a mash-up between shark and train that your character is sure to win.





LITTLE, BROWN AND COMPANY
BOOKS FOR YOUNG READERS

www.sharkvstrain.com

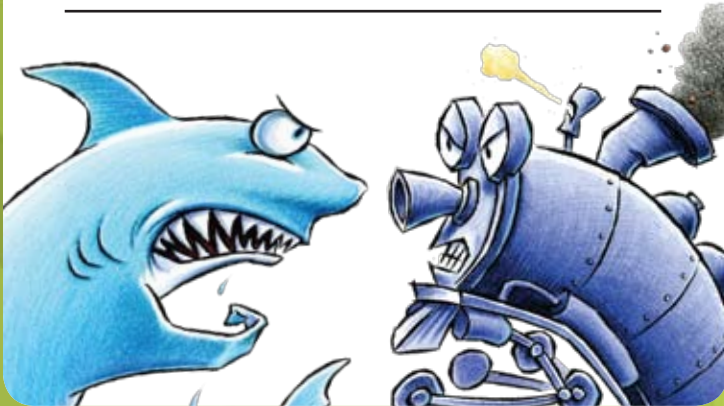
SHARK VS. TRAIN

By Chris Barton • Illustrated by Tom Lichtenheld

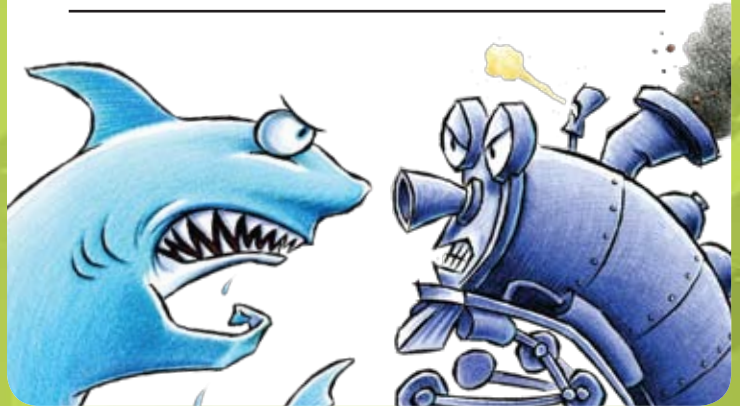
Available wherever books are sold.



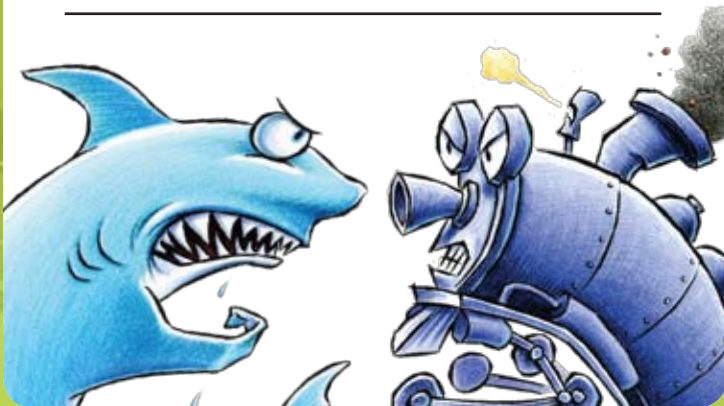
This book belongs to:



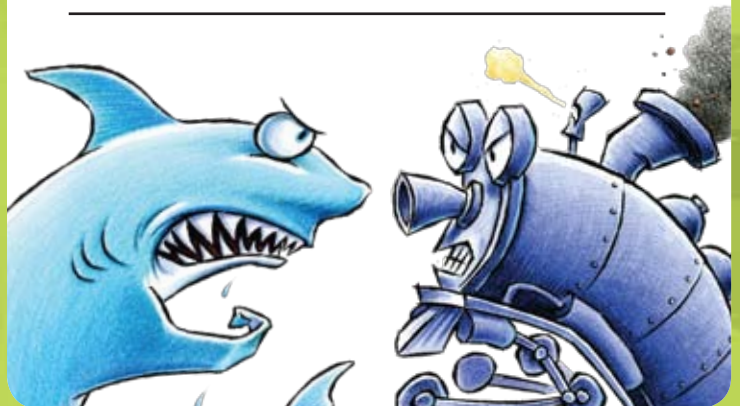
This book belongs to:



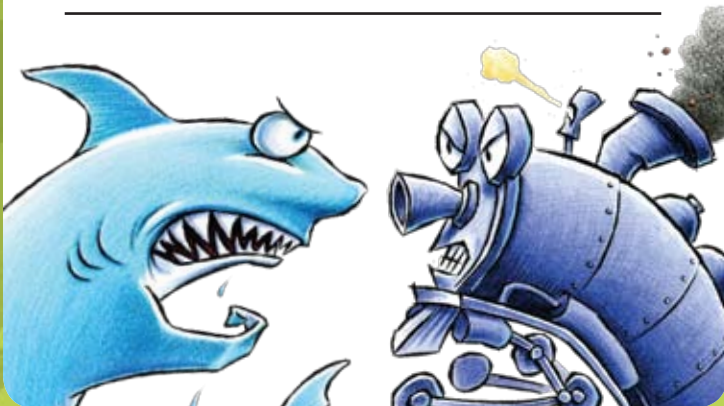
This book belongs to:



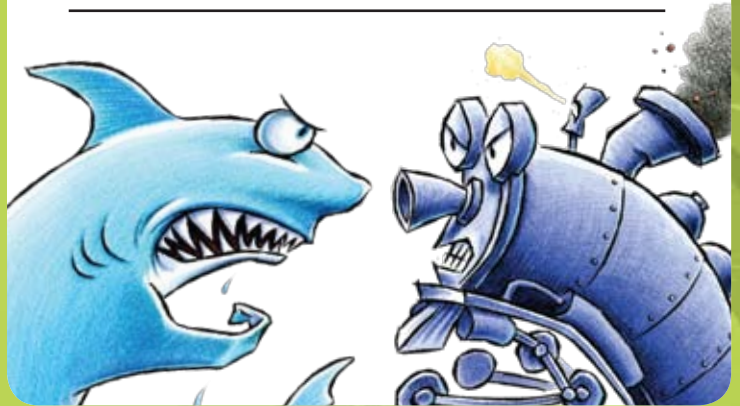
This book belongs to:



This book belongs to:

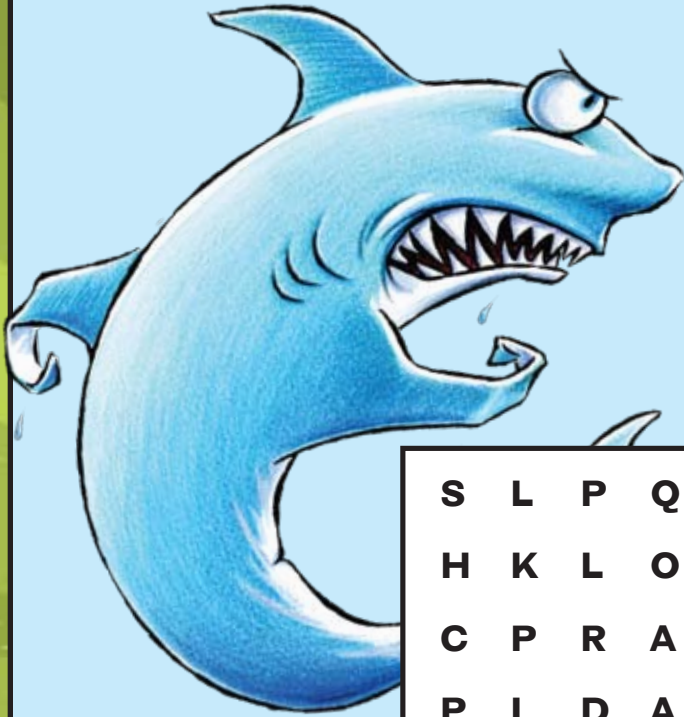


This book belongs to:



Meet SHARK

(Sharkus sharkus)



Favorite color:

Blood Red

Favorite food:

Squid pizza

Favorite game:

Marco Polo

Disposition:

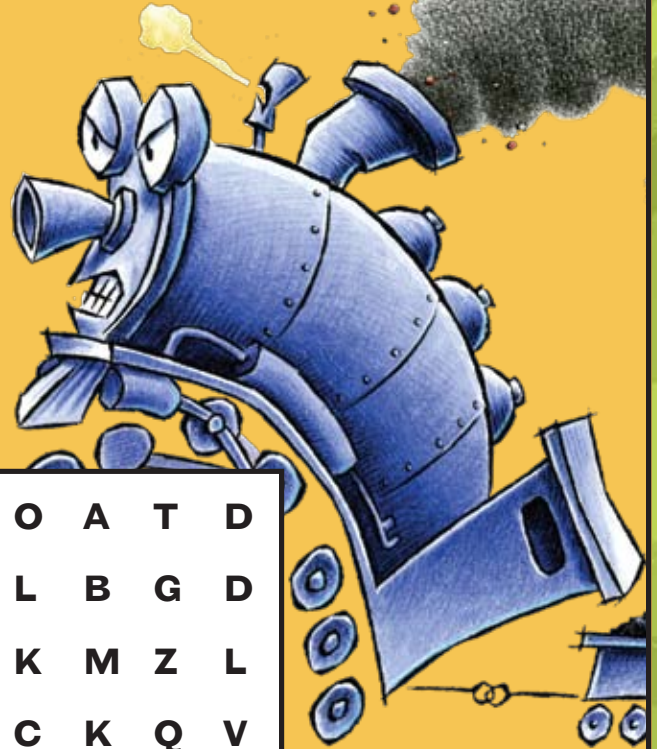
Biting sense of humor

Pet peeve:

Egotistic trains

Meet TRAIN

(Trainy train-train)



Favorite color:

Coal black

Favorite food:

Black coal

Favorite Game:

Follow the leader

Disposition:

Easily steamed

Pet peeve:

Smug sharks

S	L	P	Q	T	L	O	A	T	D
H	K	L	O	E	Y	L	B	G	D
C	P	R	A	L	H	K	M	Z	L
P	I	D	A	D	O	C	K	Q	V
I	E	P	I	H	P	A	Q	B	H
R	C	U	N	N	S	L	T	P	W
G	Q	C	O	A	L	B	R	Q	X
S	N	I	A	R	T	C	E	K	T
X	H	J	K	T	Y	H	D	I	B
W	D	A	O	R	V	Y	A	A	V

Now that you know more about Shark and Train, look for the **bolded** words in the puzzle above.



LITTLE, BROWN AND COMPANY
BOOKS FOR YOUNG READERS

www.sharkvstrain.com

SHARK vs. TRAIN

By Chris Barton • Illustrated by Tom Lichtenheld

Available wherever books are sold.



My name is



and I'm rooting for **SHARK!**

My name is



and I'm rooting for **TRAIN!**

My name is



and I'm rooting for **SHARK!**

My name is



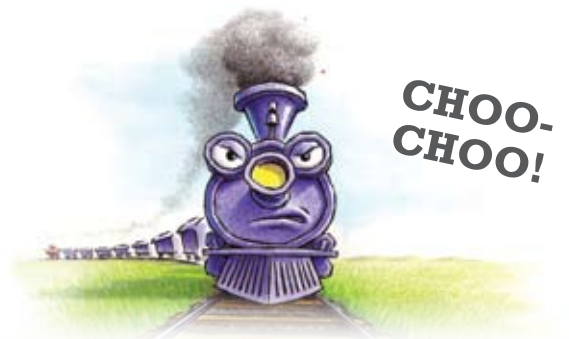
and I'm rooting for **TRAIN!**

My name is



and I'm rooting for **SHARK!**

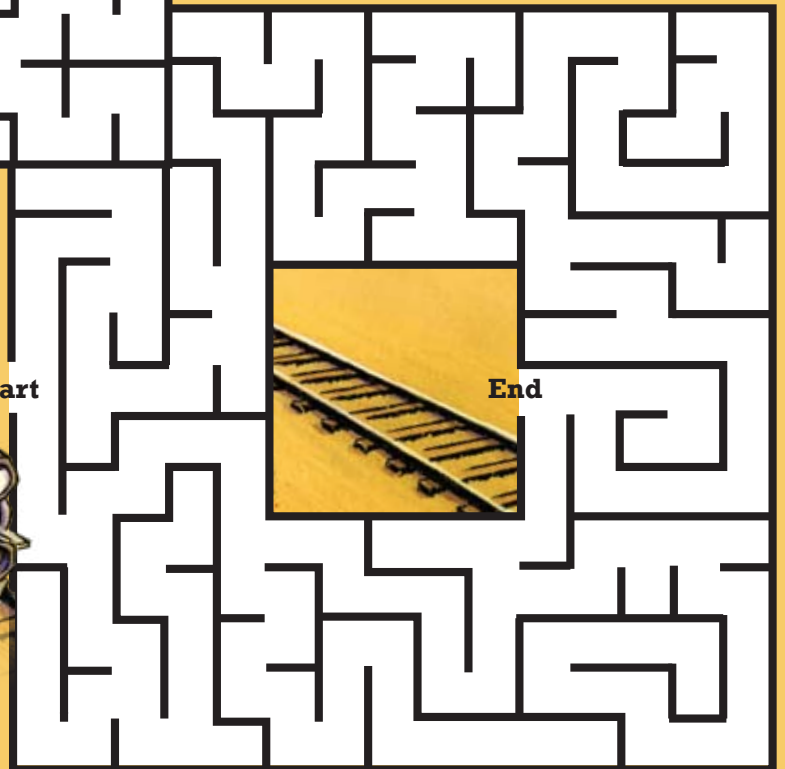
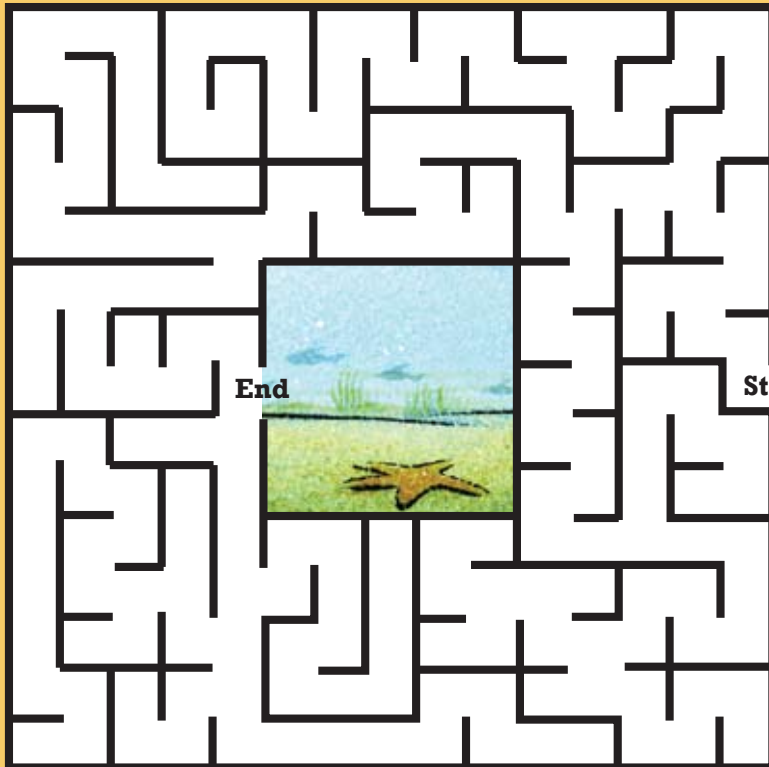
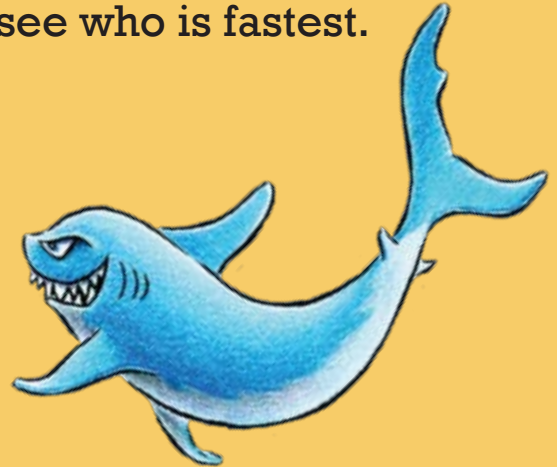
My name is



and I'm rooting for **TRAIN!**

Train and Shark are on a race to see **WHO WILL WIN!**

Guide them both
through the mazes to
see who is fastest.



Art © Tom Lichtenheld



LITTLE, BROWN AND COMPANY
BOOKS FOR YOUNG READERS

www.sharkvstrain.com

SHARK VS. TRAIN

By Chris Barton • Illustrated by Tom Lichtenheld

Available wherever books are sold.



SHARK VS. TRAIN MATCH-UP!

Shark is good at swimming. Train is good at speeding.
But which of them is better at ping pong? Draw a line from either Shark or Train to the pictures below to match who you think would win each activity.
Once you're done, add up who has won more mash-ups!



Bowling



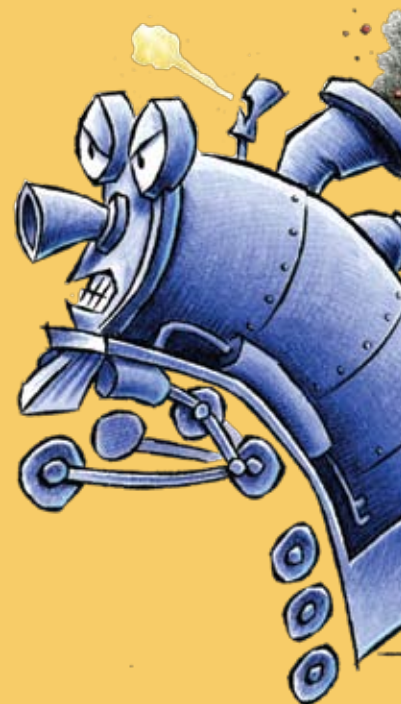
Ping Pong



Basketball



Cards



**Shark
Score:**



Video Games



Sword Fighting

**Train
Score:**



LITTLE BROWN AND COMPANY
BOOKS FOR YOUNG READERS

www.sharkvstrain.com

SHARK VS. TRAIN

By Chris Barton • Illustrated by Tom Lichtenheld

Available wherever books are sold.





Create your own contestants!

Fill in the blanks with all the descriptive words and colors you can think of and create your very own shark or train to compete in its own mash-up!

My **shark** has

_____,

skin, and

_____,

teeth, and a

_____,

fin!

My **train** has a

_____,

outside, and

_____,

eyes, and

_____,

wheels!

Art © Tom Lichtenheld



LITTLE, BROWN AND COMPANY
BOOKS FOR YOUNG READERS

www.sharkvstrain.com

SHARK VS. TRAIN

By Chris Barton • Illustrated by Tom Lichtenheld

Available wherever books are sold.

